

# INSPIRATION AWAITS

MEETINGS | INCENTIVES | CONFERENCES | EXHIBITIONS

*Cinnamon*



INTRODUCTION

MICE SERVICES

CINNAMON GRAND

ATRIUM

OAK ROOM

CEDAR ROOM

THE ANGSAANA ROOM

IVY ROOM

MAHOGANY ROOM

EBONY ROOM

ASPEN ROOM

SEQUEL

CINNAMON LAKESIDE

8' ON THE LAKE

KINGS COURT

EARLS COURT

DUKES COURT

THE WATERSIDE

QUEENS COURT

BOARDROOMS (PRINCESS, DUCHESS & EMPRESS SUITES)

BUSINESS CENTRE MEETING ROOM

CINNAMON CITADEL KANDY

CINNAMON LODGE HABARANA

HABARANA VILLAGE BY CINNAMON

CINNAMON BEY BERUWALA

TRINCO BLU BY CINNAMON

HIKKA TRANZ

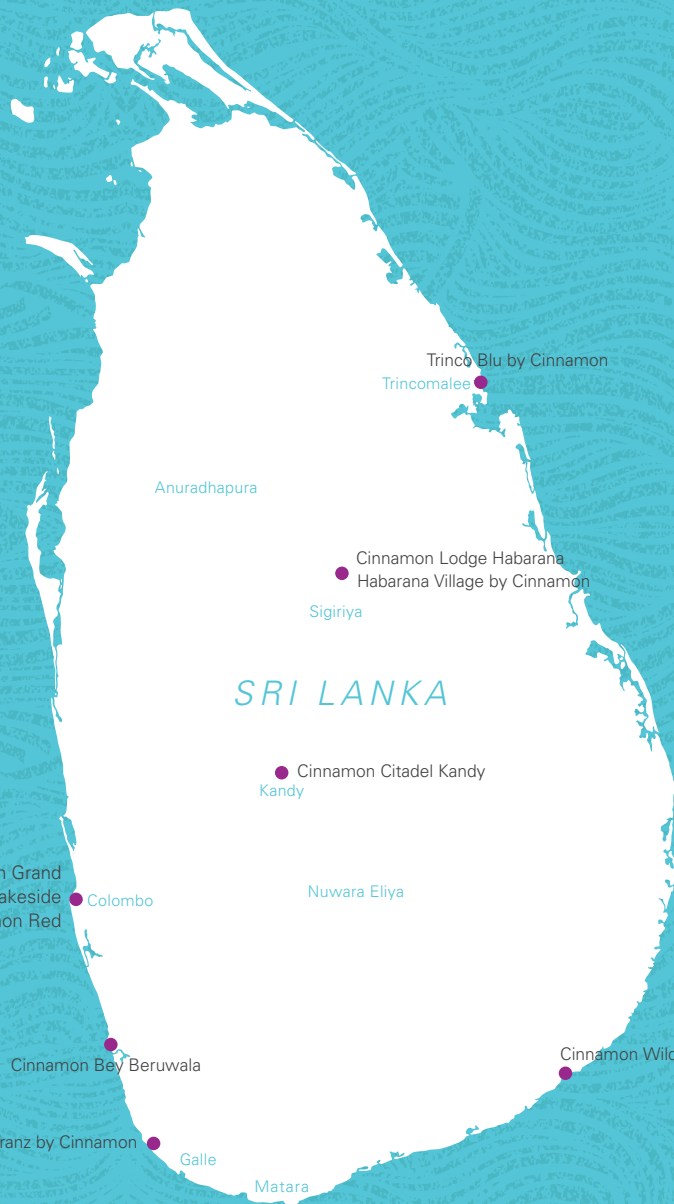
CINNAMON IN MALDIVES





# INSPIRED LIVING IN THE CITY AND BEYOND

A cosmopolitan Colombo and an emerging hub for international events, as the single largest chain in the hotel industry, Cinnamon Hotels is an ideal platform to cater to the increasing demand and strategize on providing the very best of services both within the city and beyond.



*SRI LANKA*



*MALDIVES*

A new era of a contemporary lifestyle is foreseen. Celebrate and embrace creativity, comfort and inspired living in a modern day environment. Revel in the iconic and vibrant spaces around you; make memories and cherish in the luxury of tomorrow. With 13 properties around Sri Lanka; 3 city properties, 7 resorts island wide and 3 resorts in Maldives, Cinnamon Hotels and Resorts caters to the fast growing emerging markets in Asia whilst creating experiences for people to enjoy life's best moments together.

# MICE SERVICES

MEETINGS | INCENTIVES | CONFERENCES | EXHIBITIONS

With rapid extensions in infrastructure and state-of-the-art amenities, Cinnamon Hotels are undoubtedly of international standards for corporate events whether you are in urban Sri Lanka, or by the side of wildlife with a view. Experience the Cinnamon MICE spaces, an extravagance of effort and a variety of seating arrangements to choose from, so you feel comfortable every step of the way.





# CINNAMON GRAND

A city within a city, inclusive of the best of tropical housing with 501 rooms, 14 restaurants, 10 meeting and event spaces, and multiple outdoor venues designed for the best city moments to happen right at our doorstep.

With the ease of being located in the heart of Colombo, Cinnamon Grand offers a multitude of spaces to choose from depending your event of choice. From majestic ballrooms to intimate meeting spaces this is an inkling of what 5 star spaces can do for you.









# ATRIUM

An elevated venue with an extra high ceiling and innovating décor resemble what is the atrium of the hotel. A truly one-of-a-kind venue suited for conceptual events of finesses and professionalism.

DIMENSIONS	AREA	WEDDING
82' X 54'	4428	250

BANQUET	THEATRE	COCKTAIL
250	350	300



**ATRIUM**  
**IMAGE AND FLOOR PLAN**

# OAK ROOM



A larger than life appeal comes with this venue when it caters to dinner dances, corporate launches and even conferences. The Oak Room is a massive extraordinary space combined with intelligent design and services, becoming the main ballroom of the hotel.

DIMENSIONS	AREA
109' X 57'	6213

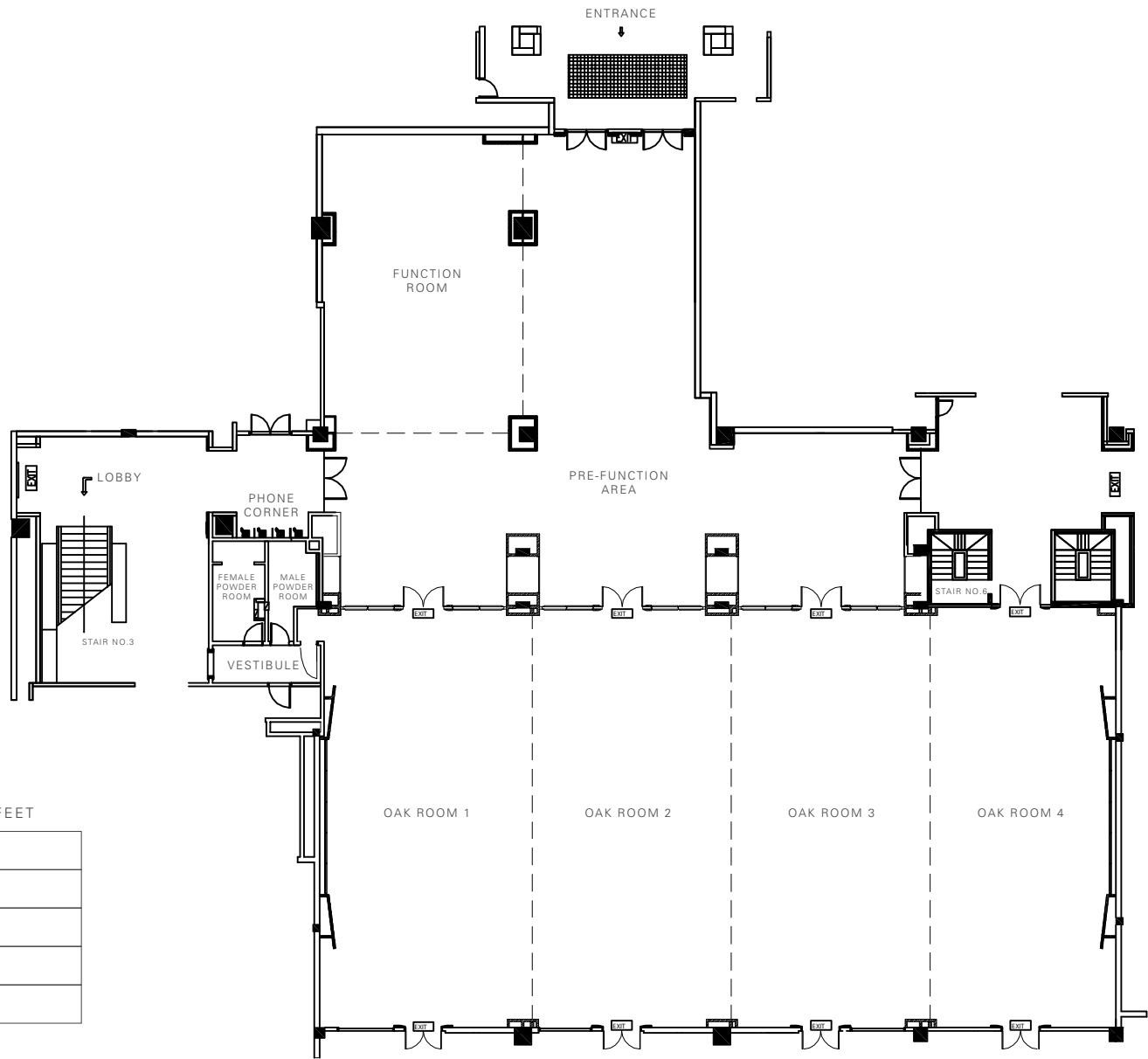
WEDDING	BANQUET
350	350

THEATRE	U-SHAPE
660	125

BOARDROOM	CLASSROOM
80	260

HOLLOW SQUARE	COCKTAIL
80	700

VENUE	DIMENSIONS	SQUARE FEET
OAK ROOM 1	30' X 60'	1800
OAK ROOM 2	30' X 60'	1800
OAK ROOM 3	30' X 60'	1800
OAK ROOM 4	30' X 60'	1800
FUNCTION ROOM	28' X 42'	1176



**CEDAR ROOM**  
**IMAGE AND FLOOR PLAN**

# CEDAR ROOM

Team meetings and intimate functions brings life to the Cedar Room, a customisable layout and set up with a more than functional design.

DIMENSIONS	AREA	WEDDING
53.5' X 25'	1337.5	60
BANQUET	THEATRE	U-SHAPE
80	100	38
BOARDROOM	CLASSROOM	COCKTAIL
30	60	75

FLOOR AREA  
134 SQ. METERS ( 1442 SQ FT )  
  
AVERAGE CEILING HEIGHT  
2.5 M ( 8' 4" )

# THE ANGSANA ROOM

Located in the City Club and Spa complex, this is a different venue compared to the norm and is also technologically versatile as well. Host your private event in an out of this world experience at the Angsana Room.

DIMENSIONS	AREA	BANQUET
49' X 16.5'	808.5	35
THEATRE	U-SHAPE	BOARDROOM
80	30	25
CLASSROOM	HOLLOW SQUARE	COCKTAIL
42	25	50

**THE ANGSANA ROOM**  
**IMAGE AND FLOOR PLAN**

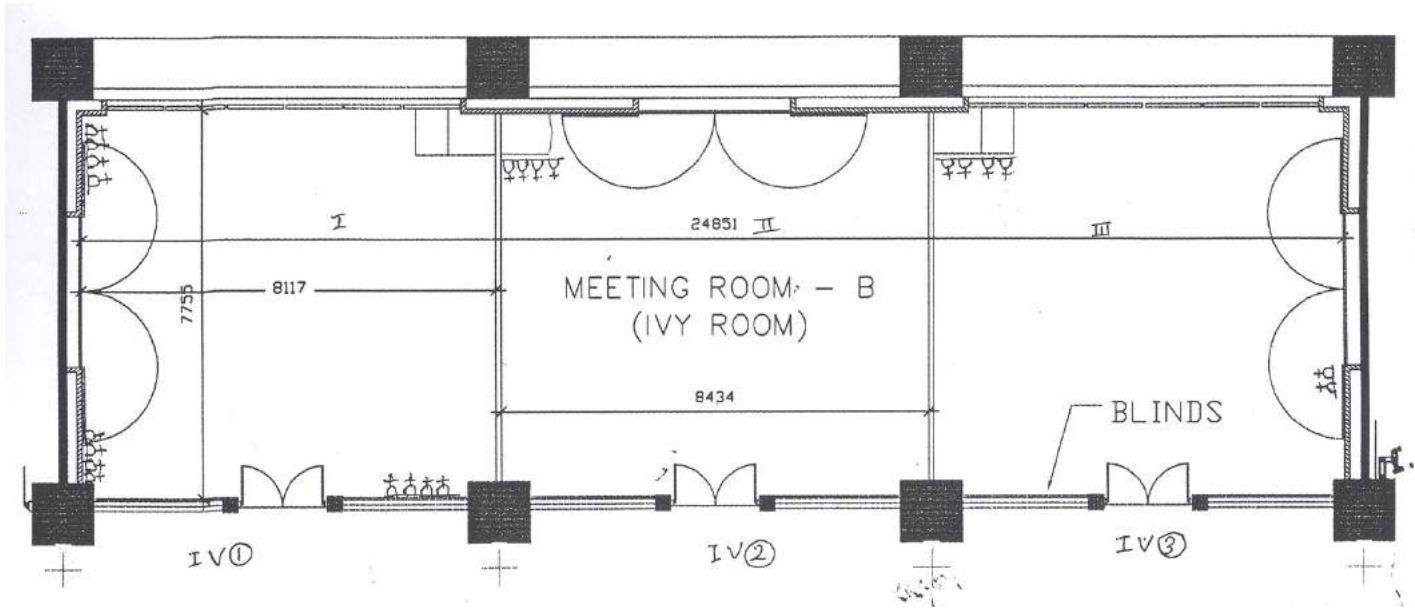


## IVY ROOM

A great place for workshops, master-classes and mini conference seating a 100 people inside, the Ivy Room is undoubtedly the best for regal moment and great memories.







FLOOR PLAN  
REDRAWN

DIMENSIONS	AREA	WEDDING
78.5' X 29'	2276.5	100

BANQUET	THEATRE	U-SHAPE
100	160	40

BOARDROOM	CLASSROOM	COCKTAIL
40	80	125

FLOOR AREA  
201.3 SQ. METERS ( 2167 SQ FT )  
  
AVERAGE CEILING HEIGHT  
2.5 M ( 8' 4" )

**MAHOGANY ROOM**  
**IMAGE**

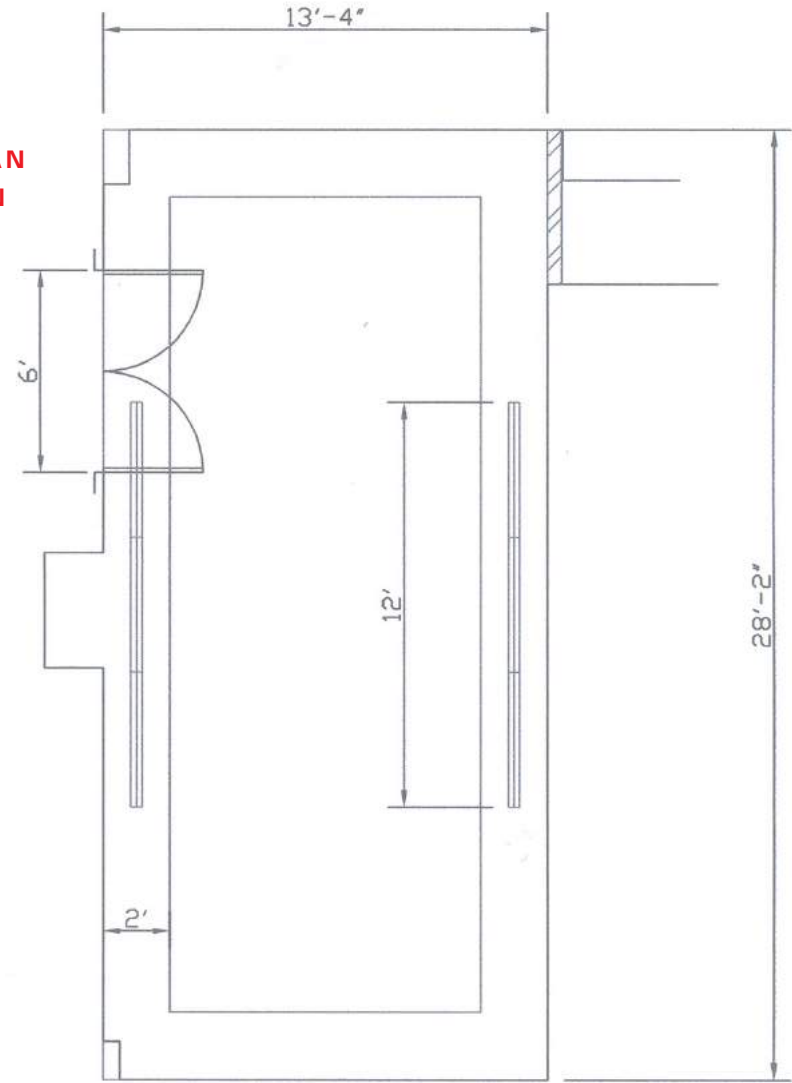
# MAHOGANY ROOM

An office away from yours, a different setting for all important decision-making meetings. Work on the bigger picture in the comfort of the Mahogany Room.

DIMENSIONS	AREA	BANQUET	THEATRE
27' X 13'	351	10	25

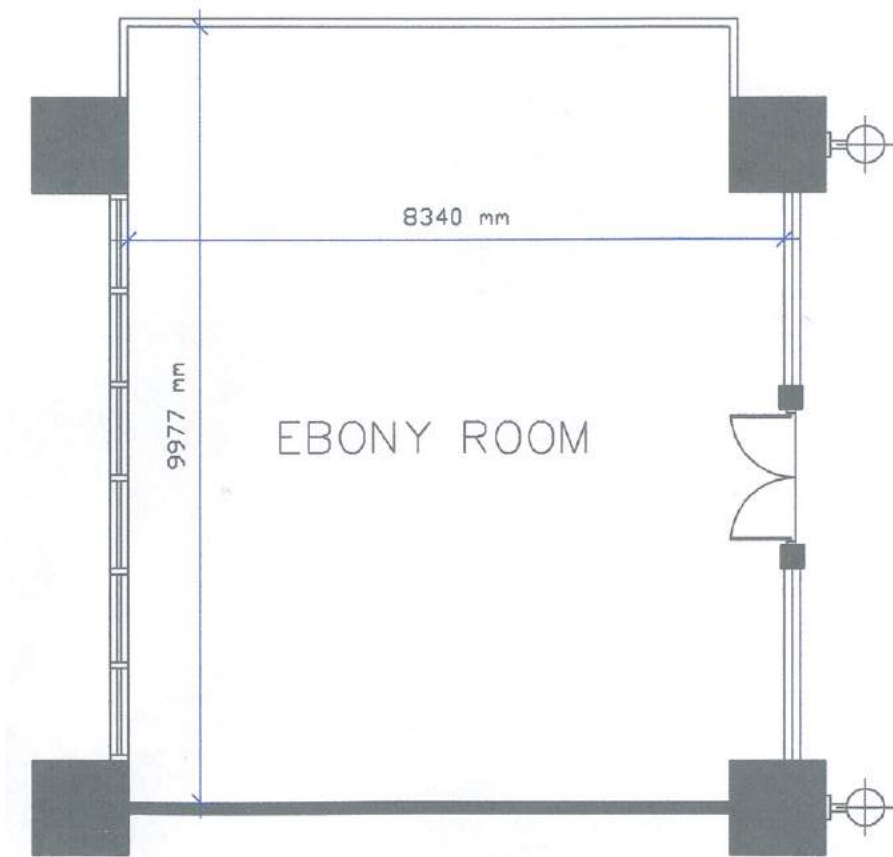
U-SHAPE	BOARDROOM	CLASSROOM	HOLLOW SQUARE
15	12	15	12

FLOOR PLAN  
REDRAWN



**EBONY ROOM  
IMAGE**

**FLOOR PLAN  
REDRAWN**



**EBONY ROOM**

Inspiring designs and easy customisable room set ups give a cosy feel to your next staff meeting or gathering creating the perfect moments.

FLOOR AREA  
81.4 SQ. METERS ( 876 SQ FT )

AVERAGE CEILING HEIGHT  
2.5 M ( 8' 4" )

DIMENSIONS	AREA	WEDDING
29.5' X 25'	737.5	30
BANQUET	THEATRE	U-SHAPE
40	50	21
BOARDROOM	CLASSROOM	COCKTAIL
24	24	35

# ASPEN ROOM

Whether its inspiration for great ideas or making important team decisions, the Aspen Room provides plush seating and space ideal for a great event.

DIMENSIONS	AREA	BANQUET	THEATRE
15' X 22'	330	15	20
U-SHAPE	BOARDROOM	CLASSROOM	COCKTAIL
15	15	10	20

**THE ASPEN ROOM**  
**IMAGE AND FLOOR PLAN**

## SEQUEL

The venue for things classy and elegant, the Sequel is your bar and nightclub combined. An intimate special setting for private gatherings come together for great cocktail events.



SEQUEL FLOOR PLAN

DIMENSIONS	AREA	BANQUET
37' X 17.9'	662.3	50
U-SHAPE	BOARDROOM	CLASSROOM
25	26	30

# CINNAMON LAKESIDE







The perfect venue works wonders in ambiance and environment which is why Cinnamon Lakeside has a wide range of spaces with a view of the serene Beira lake in the background. Our selection of 2 ballrooms, 3 conference venues, 3 boardroom suites and of course our exclusive floating venue on the Beira Lake, make Cinnamon Lakeside the perfect luxury hotel in Colombo to host something extraordinary.





8° ON THE LAKE

DIMENSIONS AND AREA

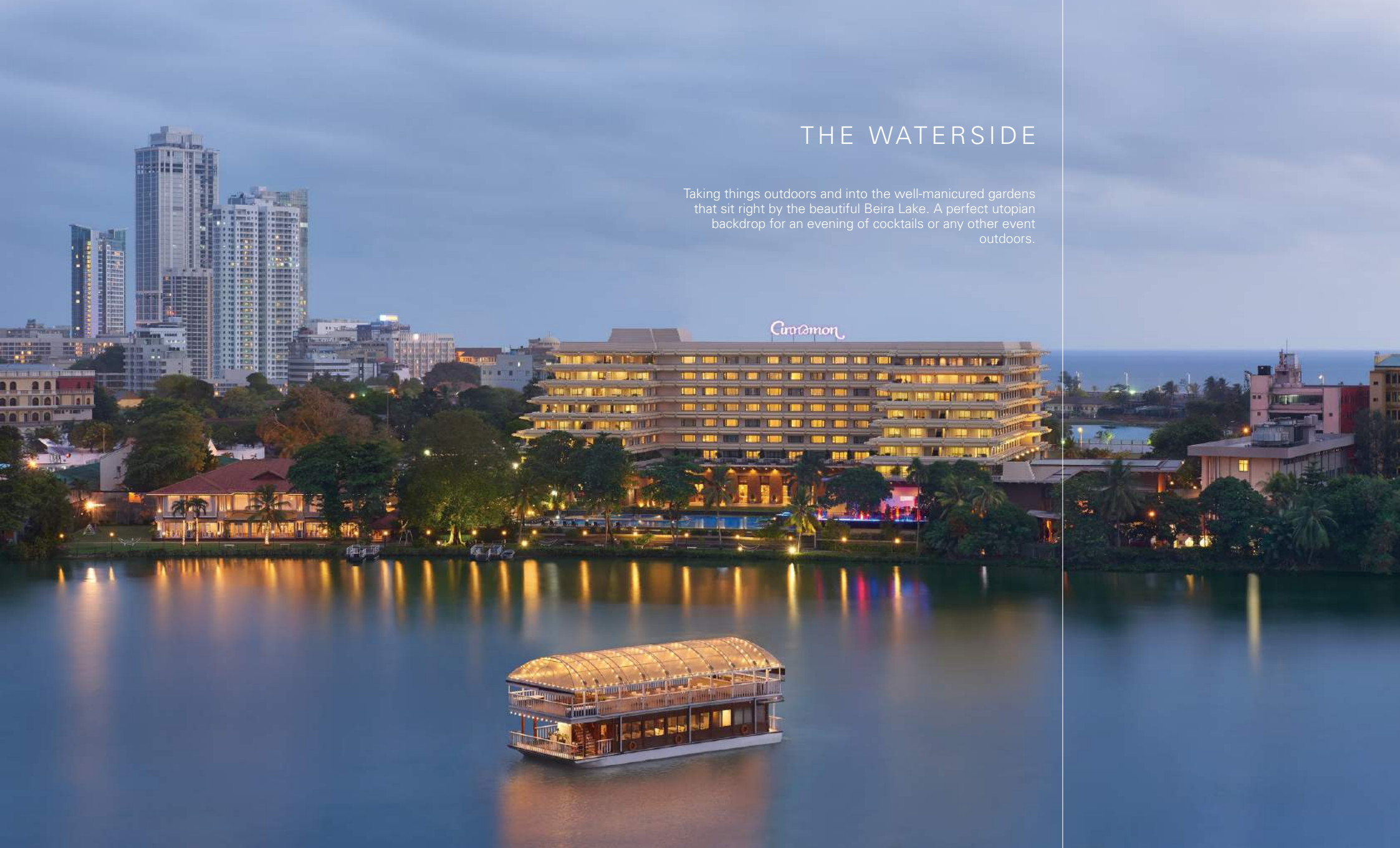
DIMENSIONS	AREA	WEDDING
		50
BANQUET	THEATRE	U-SHAPE
58	60	25
BOARDROOM	HOLLOW SQUARE	COCKTAIL
20	20	100

Whether its inspiration for great ideas or making important team decisions, the Aspen Room provides plush seating and space ideal for a great event.



## THE WATERSIDE

Taking things outdoors and into the well-manicured gardens that sit right by the beautiful Beira Lake. A perfect utopian backdrop for an evening of cocktails or any other event outdoors.







15 AMP

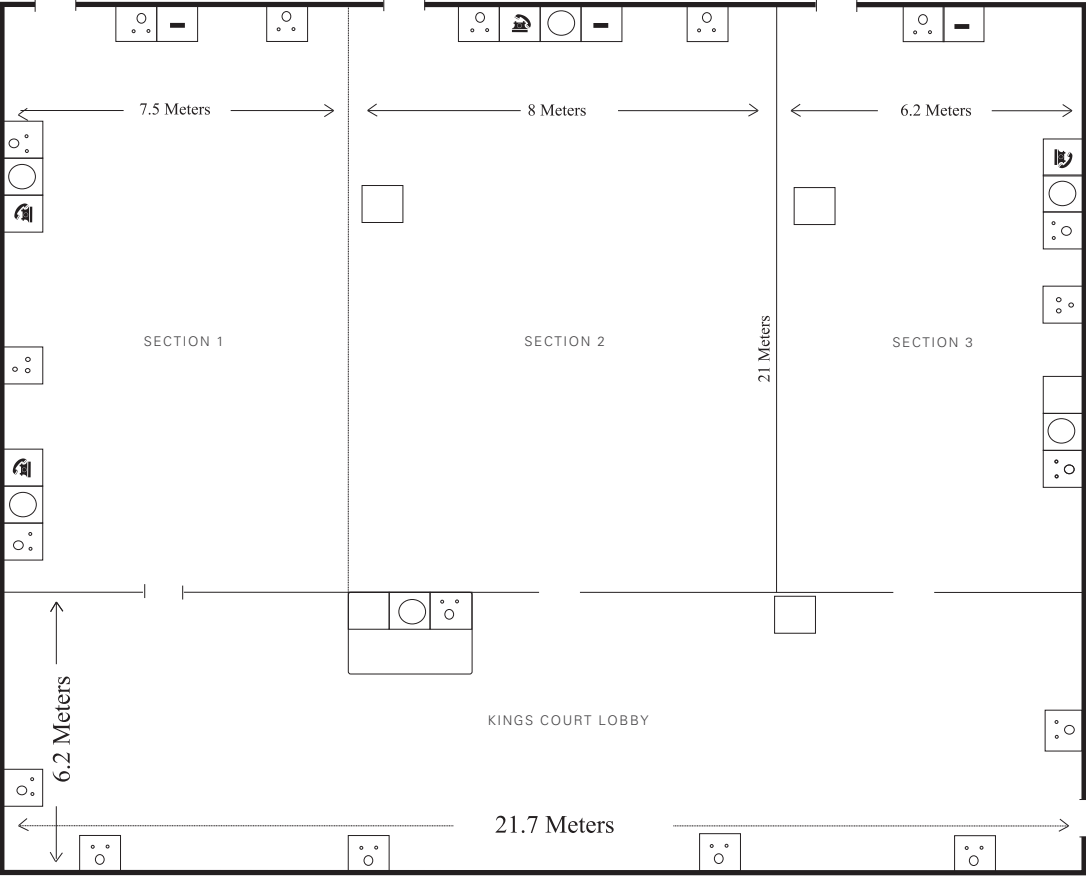
5 AMP

OVERHEAD SPEAKERS

TELEPHONE

TV

FIRE SPRINKLERS



DIMENSIONS AND AREA

DIMENSIONS	AREA
WEDDING	BANQUET
400	400
THEATRE	U-SHAPE
600	150
BOARDROOM	CLASSROOM
150	250
HOLLOW SQUARE	COCKTAIL
150	600

SECTION 1 AREA

VENUE	DIMENSIONS (M)	SQUARE METERS
LOBBY	21.7 X 6.2	1130
SECTION 1	7.5 X 21	
SECTION 2	8 X 21	152
SECTION 3	6.2 X 21	126



## KINGS COURT

A show-piece master-ballroom releases an aura of royalty as The King's Court has hosted many conferences, dinner dances, fashion shows and launches under a crystal chandelier and in between the gold-mirrored spaces.

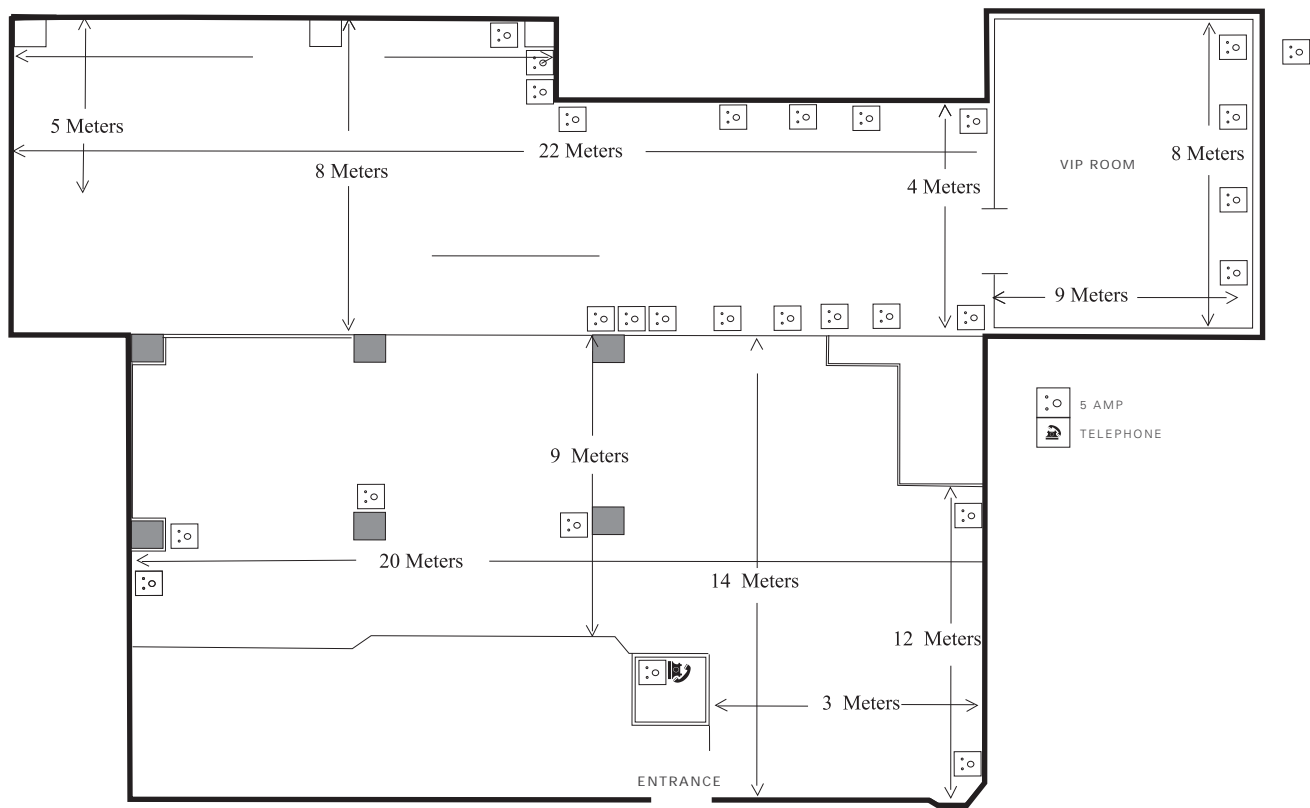




# EARLS COURT

A venue that brings out the personality of an event so well with its setup and layout. With an inbuilt bar, greeting lounge and close accessible restrooms, the Earl's Court becomes the ideal workshop and conference venue.





## DIMENSIONS AND AREA

DIMENSIONS	AREA
WEDDING	BANQUET
200	200
THEATRE	U-SHAPE
175	50
BOARDROOM	CLASSROOM
25	70
HOLLOW SQUARE	COCKTAIL
50	300

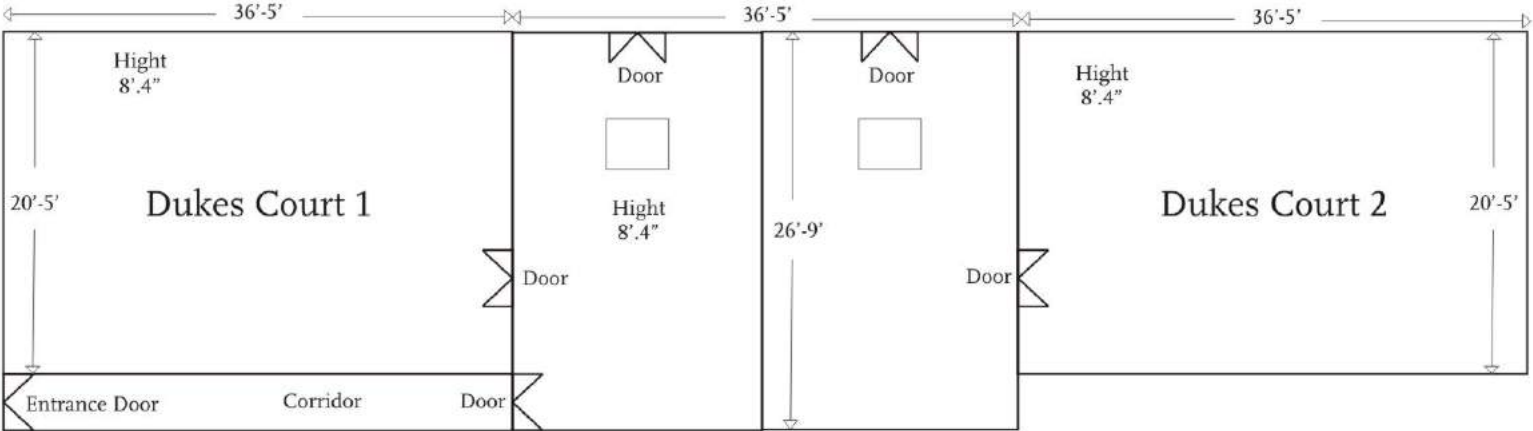


## DUKES COURT

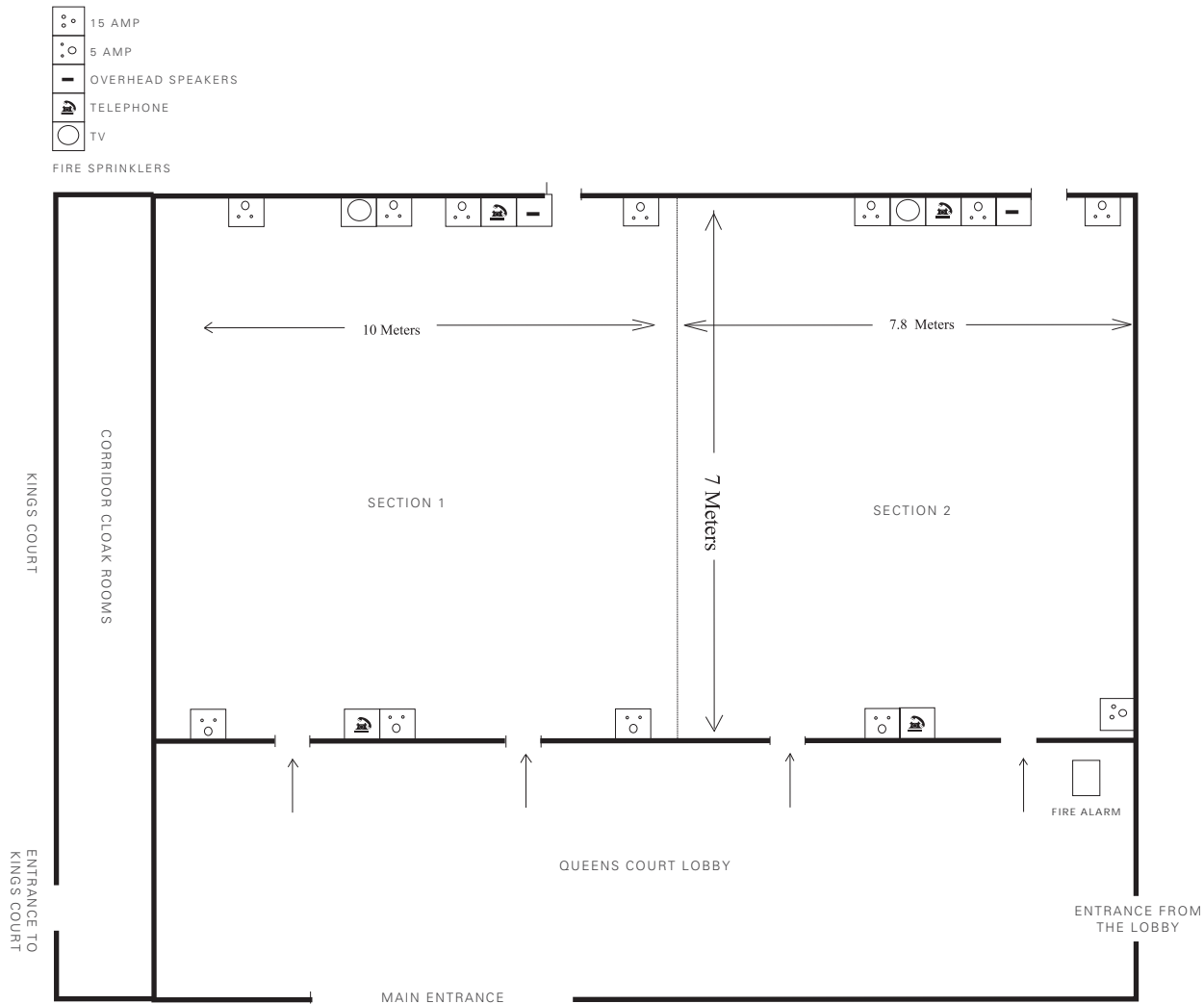
With a venue that opens into the gardens, it automatically brings your evenings to an outdoor experience as well. The Dukes Court is perfect for cocktails, receptions, presentations and exclusive private parties housing as many 100 people or be partitioned into two intimate spaces.



**FLOOR PLAN  
REDRAWN**



**CAPACITY CHART NOT AVAILABLE ONLINE**



## DIMENSIONS AND AREA

DIMENSIONS	AREA
WEDDING	BANQUET
50	50
THEATRE	U-SHAPE
100	45
BOARDROOM	CLASSROOM
30	60
HOLLOW SQUARE	COCKTAIL
30	65

VENUE	DIMENSIONS (M)	SQUARE METERS
SECTION 1	10 X 7	67.5
SECTION 2	7.8 X 7	52

**QUEENS COURT  
IMAGE**

## QUEENS COURT

A flourished space for special evenings and corporate events such as wine tastings, private cocktails and workshops that come to life in a special setting of sorts. A statement venue for a mini conference, workshop as well as business meetings ensuring complete privacy from the outside world.

## BOARDROOMS

(PRINCESS, DUCHESS & EMPRESS SUITES)

A resort in the city that can accommodate intimate business gatherings with sleek executive chairs meeting equipment and stationery combining all personal services to make a convenient brainstorm session right in the middle of the city.



**BOARDROOM  
IMAGE  
FLOOR PLAN  
CAPACITY CHART**

## BUSINESS CENTRE MEETING ROOM

Housed on the executive floor, the exclusive suites are entitled to exceptional privileges that makes for smooth business practices and fruitful meetings with a view.

**BUSINESS CENTRE  
IMAGE  
FLOOR PLAN  
CAPACITY CHART**

# CINNAMON CITADEL KANDY

A breath-taking view on the hills in the quaint countryside of Kandy facing the majestic Mahaveli river front. An exceptional place for corporate meetings overlooking the gentle waters of the river, the Main Conference Hall is an idyllic experience to have corporate meetings and forums with absolutely no disturbance from the outside world whatsoever.











# MAIN CONFERENCE HALL

## DIMENSIONS AND AREA

DIMENSIONS	AREA	CHEVRON	
		24	
THEATRE	U-SHAPE	BOARDROOM	CLASSROOM
80	30	40	60

## MAIN CONFERENCE HALL FLOOR PLAN



# CINNAMON LODGE HABARANA

Work away from home with the peaceful surrounding of mother nature around you. Be at bird's eye view as you meet and greet with fellow business associates. Here at Habarana Lodge we take pleasure in offering breathtaking views while you work in our best of spaces, the Tree Top Conference Hall.







# THE TREE TOP CONFERENCE HALL

## DIMENSIONS AND AREA

DIMENSIONS		AREA	CHEVRON	
			50	
THEATRE		U-SHAPE	BOARDROOM	CLASSROOM
100		40	40	50









# HABARANA VILLAGE BY CINNAMON

Where rustic elegance meets lush wilderness is what Habarana Village offers, while you experience your meeting in a different setting of sorts. A truly authentic village-style scene in a pristine environment, brightly lit up and away from the hustle and bustle is set amidst lush greenery.





# GAM SABA CONFERENCE HALL

## DIMENSIONS AND AREA

DIMENSIONS		AREA	CHEVRON	
			60	
THEATRE		U-SHAPE	BOARDROOM	CLASSROOM
200		40	90	80



**GAM SABA IMAGE  
AND FLOOR PLAN**





# CINNAMON BEY BERUWALA

The ocean breeze runs free adjoining the lake where the best of both worlds meet. Whether it is a workshop venue or a meet and greet, this is the ideal place to go through presentations. Situated on the top floor of our beach hotel, The Kutlama Hall which is our main ballroom is a luxurious setting which is also spaced out brilliantly.



# KUTLAMA HALL

## DIMENSIONS AND AREA

DIMENSIONS		AREA	BANQUET	
			200	
CHEVRON		THEATRE		U-SHAPE
150		260		125
				CLASSROOM
				160

## FLOOR PLAN









Through picture perfect views of the sea to a hall with plush seating to host corporate meetings and events in, Trinco Blu is an exceptional location to get away from the mundane processes to something exciting by the beach.

# TRINCO BLU BY CINNAMON





# THE LIGHTHOUSE HALL

## DIMENSIONS AND AREA

DIMENSIONS		AREA	BOARDROOM	
			40	
CHEVRON	THEATRE		U-SHAPE	CLASSROOM
50	75		40	50

## FLOOR PLAN



THE LIGHTHOUSE HALL  
IMAGE



# THE TRANZITION BALLROOM & CONFERENCE HALL

## DIMENSIONS AND AREA

DIMENSIONS		AREA	BOARDROOM	
			65	
CHEVRON	THEATRE		U-SHAPE	CLASSROOM
200	500		60	200

## FLOOR PLAN







# HIKKA TRANZ

A vibrant and youthful resort down south for the free-spirited souls. Delve into productive meetings and forums while still leaving plenty of time to party, all in a day's work. With the hall's huge capacity, the ability to hold large-scale events and workshops are possible are effortless, all set up on the ground floor for convenience.



# CINNAMON IN MALDIVES

A star experience in an island off Male is just a few miles away. Watching turquoise blue waters surround amidst palm trees in the distance. An excellent choice of sea food delicacies prepared to your liking. Cinnamon Dhonveli, Cinnamon Hakuraa Huraa and Ellaidhoo Maldives by Cinnamon is where work meets pleasure, with team building excursions and entertainment coming hand in hand. Have a relaxing evening with your associates by the bar and lounge or go island-hopping and explore hidden treasures of nature around. Delve into a truly Cinnamon experience!

Diving, surfing, snorkelling and water sports  
Excursion to inhabited island "Hangnaameedhoo"  
Outdoor sports and indoor sports  
Live music and beach/pool party



**IMAGES  
OF THE HOTELS IN THE MALDIVES**



As we define the best of contemporary Sri Lankan culture, entertainment and hospitality through our chain of hotels and resorts, experience our exceptional MICE spaces island wide. With the rapid shift in demand to Sri Lanka as a destination to host events of grand magnitude, our incredible locations in various parts of the island will cater to your every need when it comes to MICE.